



PAC TEC

SEATING VENEERS WITH AN AUDIENCE



Dr. Thomas Dudney

For most dentists seating 8-10 porcelain veneers can quite often be a stressful appointment due to a variety of reasons. So naturally when I was asked to do a live patient demonstration at the Greater New York Dental meeting in front of 500 to 600 dentists in the audience I chose cementing ten porcelain veneers as my program. As if the thought of performing any dental procedure in front of such a large group wasn't stressful enough, I figured why not pick one where many things can and often do go wrong. Part of my reasoning was that the "live portion" of the program, combined with a video showing tooth preparation and provisional fabrication, would allow me to demonstrate what we teach in the Pacific Aesthetic Continuum live patient hands-on programs, but also I felt confident that Gary Vaughn and his team at Corr Dental Designs would provide me with restorations that looked and fit great, making seating less stressful. Once the decision was made there was no going back and it was on to choosing the right patient that would further contribute to a smooth flowing



Figure 1



Figure 2



Figure 3



Figure 4



Figure 5



Figure 6

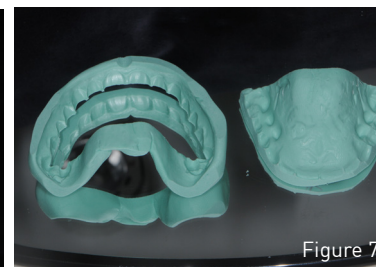


Figure 7

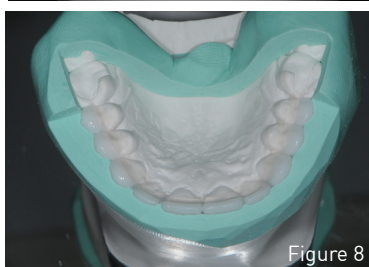


Figure 8

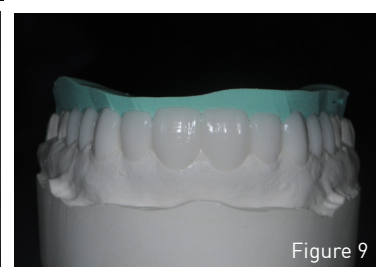


Figure 9

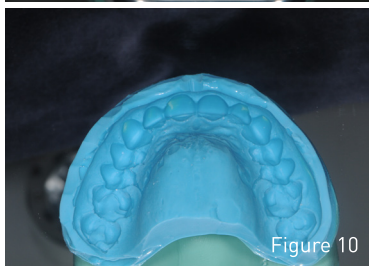


Figure 10

procedure.

As it turned out the patient I selected was my hygienist because I knew it would be a minimal prep case and that I could count on her to have healthy tissue with no bleeding which would help to decrease some of

the stress during seating. Temple had previously had eight porcelain veneers placed in our office that were now about 20 years old and while still clinically acceptable had begun to show signs of aging. Additionally I thought she could benefit from a little more length and restoring ten teeth instead of eight would increase width in the buccal corridors in order to provide support for facial soft tissues, decrease negative space, and give more fullness to the smile. It was also agreed upon that slightly whiter and brighter restorations would further enhance aesthetics and given the fact that Temple had been a loyal employee for over 20 years and would be a very cooperative and easy to work on patient, this program seemed to provide a good opportunity to redo her veneers with the type of case I desired. (Figure 1-5)

After case selection the first step was to determine incisal edge position and length of centrals and then forward all the necessary information to the laboratory with instructions for a diagnostic wax-up. The wax-up was used to fabricate prep guides to aid in tooth preparation and a putty matrix that would be used for a pre-op indirect mock-up as well as for making

SEATING VENEERS

continued from page 1



Figure 11



Figure 12



Figure 13



Figure 14



Figure 15



Figure 16



Figure 17

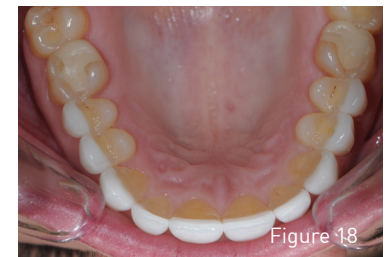


Figure 18

the provisional restorations. (Figure 6-10) At the post-op appointment provisionals were utilized to evaluate the treatment goals including adding length, decreasing negative space, and a whiter, brighter smile, and also to serve as a blueprint for the laboratory to follow when fabricating the definitive restorations. (Figure 11-13)

At the Greater New York Dental Meeting the actual try-in and cementation of the veneers in front of a live audience with multiple cameras from different angles projecting the procedure onto large screens was relatively stress-free. The cut back and layered Empress Veneers looked great and fit perfectly and along with the patient's healthy tissue played a vital role in a successful outcome. The importance of the dental laboratory in smile design cases cannot be overstated. When combined with the principles and techniques taught in live patient hands-on programs like the Pacific Aesthetic Continuum (PAC), the laboratory contributes greatly to patient satisfaction and clinical

success, not to mention appointments that are less stressful even when seating veneers in front of a large audience. To Gary Vaughn and all the people at Corr Dental Designs a big thank you for doing just that and a job well done. (Figure 14-18)

If you have questions about my article or if you would like to send a case, please contact the Pacific Aesthetic Laboratory Group at www.pacificaestheticdentalstudio.com, Gary Vaughn, CDT, CTO (916) 786-6740, or via email gvaughn@thePAC.org.

UPCOMING EVENTS

Mar 31-Apr 1, 2017	Live Patient Hands-on, Prep Sacramento, CA
Apr 6, 2017	Chicago Study Club Chicago, IL
Apr 17, 2017	Detroit Study Club Birmingham, MI
Apr 25, 2017	SVACD Sacramento, CA
May 4, 2017	Chicago Study Club Chicago, IL
May 5-6, 2017	Live Patient Hands-on, Seat Sacramento, CA
May 5-6, 2017	Over the Shoulder Program Detroit, MI

For a complete list of events, visit us online at www.thePAC.org

Pacific Aesthetic Laboratory Group



Gary Vaughn, CDT, CTO

Do you have questions
about a case or would you
like to send a case?
Contact Gary Vaughn, CDT,
CTO at
916-786-6740

Corr Dental Designs

Gary Vaughn, CDT, CTO
Ryan Corr, Laboratory Manager
700 Sunrise Ave #L
Roseville, CA 95661
916-786-6740
gvaughn@thePAC.org
rcorr@thePAC.org
www.corrdentaldesigns.com

Pacific Aesthetic Dental Studio

Gary Vaughn, CDT, CTO
309 1/2 Copa de Oro
Brea, CA 92823
916-786-6740
gvaughn@thePAC.org
www.pacificaestheticdentalstudio.com